

VIOLONCELLO

1 2 3 4 5 120 1

p *f* *p*

2 3 4 5 6 7 130 2 *p*

f *p*

140 1 1 2

150 1 *f*

160 *p*

170 1 *f*

3 3 3 3 3 3 3 3 3 3 3 3 3 3 3

180

190

200 1 210

pp

VIOLONCELLO

220

230

240

250

260

270

280

290

1.

2.

VIOLONCELLO

Un poco adagio e affettuoso

p

10

Var. I

20

p

30

Var. II

40

p dolce

50

60

70

Var. III

p

musical staff with bass clef, 2/4 time signature, and key signature of one flat. The music consists of eighth and sixteenth notes with slurs. The instruction *sotto voce* is written below the staff.

musical staff starting with measure 80. It continues with eighth and sixteenth notes and slurs.

musical staff starting with measure 90. It includes a first ending bracket labeled '1' and continues with eighth and sixteenth notes.

musical staff starting with measure 100. It features a *ff* dynamic marking and includes slurs and accents.

musical staff starting with measure 110. It includes dynamic markings *p*, *fz*, *p*, *fz*, *p*, *fz*, and *p*, *fz*.

musical staff starting with measure 120. It includes dynamic markings *p*, *f*, *pp*, *f*, and *pp*.

Menuet alla Zingarese

Allegretto

musical staff for the beginning of the Minuet. It is in 3/4 time with a key signature of two sharps. It includes dynamic markings *f* and *fz*.

musical staff starting with measure 10. It includes dynamic markings *fz* and *fz*. Measure 20 is also indicated.

Trio

musical staff for the Trio section, starting with a double bar line and repeat sign. It features a sixteenth-note pattern.

musical staff starting with measure 30. It continues with the sixteenth-note pattern.

Menuet da Capo

VIOLONCELLO

Presto e scherzando

1 *f*

10 *tr*

1

20

p

30 *f*

40

1. *p*

2. 50

VIOLONCELLO

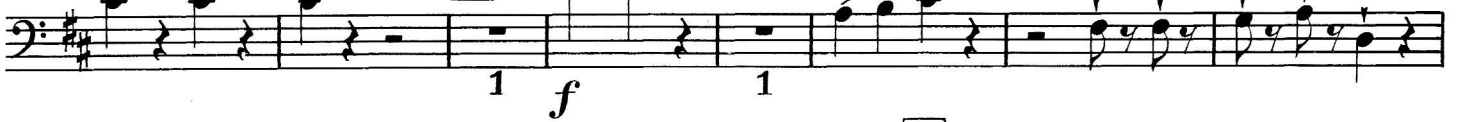
60



70



80



90



100



110



120



p